

# Whale3030FPM

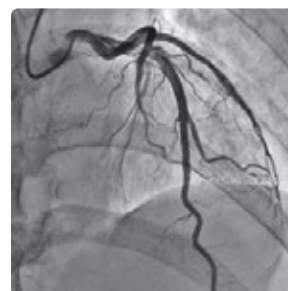
a-Si X-ray flat panel detector



## Key Features

- Large area imaging, no edge image distortion
- The frame rate of Max. 18 fps (1x1)
- Sensitivity comparable to image intensifiers
- Better dynamic range and image signal-to-noise ratio than image intensifier

**Whale3030FPM** is a fixed type, dynamic flat panel detector based on a-Si technology. The advanced a-Si TFT provides an ultra low-noise image at a low dose and a high acquisition frame rate. It features excellent sensitivity and high dynamic range modes. It is an optimal solution in C-arm systems.



# Technical Specifications

Technology	
Sensor	A-Si
Scintillator	CSI / GOS
Active Area	286 x 286 mm
Pixel Matrix	2048 x 2048
Pixel Pitch	140 $\mu$ m
AD Conversion	16 bits
Interface	
Data Interface	2.5G Ethernet
Exposure Control	Pulse Sync In / Pulse Sync Out
Frame Speed	18 fps (1x1)
Operating System	Windows7 / Windows10 OS 32 bits or 64 bits
Technical Performance	
Resolution	3.5 lp/mm
Energy Range	40~160 KV
Lag	0.8% @ 1st frame
Dynamic Range	$\geq$ 86 dB
Sensitivity	620 lsb/uGy
SNR	49 dB @ (20000lsb)
MTF	72% @ (1 lp/mm) 44% @ (2 lp/mm) 25% @ (3 lp/mm)
DQE (2uGy)	66% @ (0 lp/mm) 42% @ (1 lp/mm) 28% @ (2 lp/mm)
Mechanical	
Dimension(H x W x D)	330 x 330 x 34 mm
Weight	5.1 Kg
Sensor Protection Material	Carbon Fiber
Housing Material	Aluminum Alloy
Environmental	
Temperature Range	10~35°C (operating) ; -10~50°C (storage)
Humidity	30~70% RH (non-condensing)
Vibration	IEC/EN 60721-3 class 2M3 (10~150 Hz, 0.5 g)
Shock	IEC/EN 60721-3 class 2M3 (11 ms, 2 g)
Dust and Water Resistant	IPX0
Power	
Supply	100~240 VAC
Frequency	50/60 Hz
Consumption	10 W

