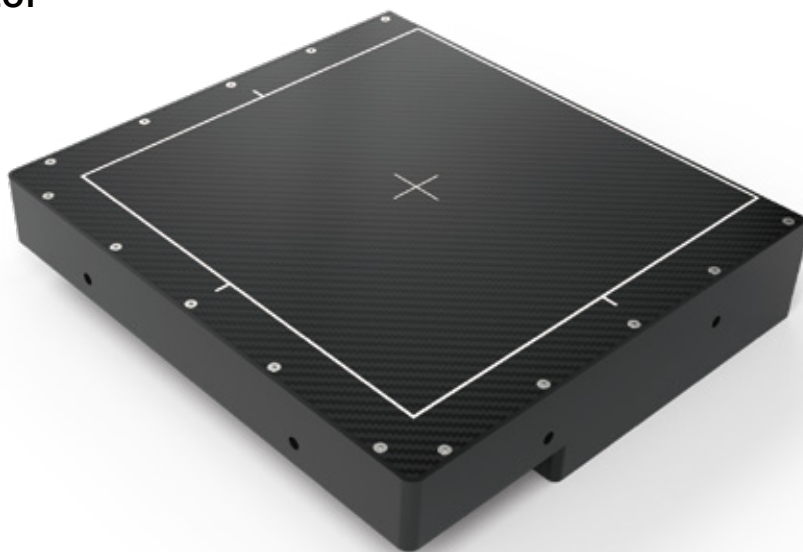


X-Panel 1515a FPI



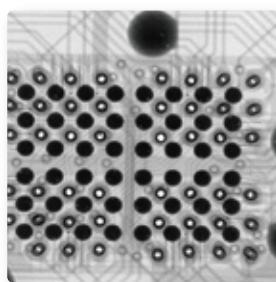
a-Si X-ray flat panel detector



Key Features

- 75 μm pixel pitch
- Excellent sensitivity and high dynamic range modes
- ROI area scan function can replace the linear array detector
- CsI scintillator offers lower dose and high image quality

X-Panel 1515a FPI is a 15.3 x 15.3 cm fixed type and low noise X-ray flat panel detector based on a-Si technology that features excellent sensitivity and high dynamic range modes among other benefits. X-Panel 1515a FPI has good image quality and a large dynamic range. It is an optimal solution in SMT and battery inspection .



Technical Specifications

Technology	
Sensor	a-Si
Scintillator	CsI / GOS
Active Area	153 x 153 mm
Pixel Matrix	2048 x 2048
Pixel Pitch	75 μ m
AD Conversion	16 bits
Interface	
Data Interface	2.5G Ethernet
Exposure Control	Pulse Sync In / Pulse Sync Out
Frame Speed	18fps (1x1)
Operating System	Windows7 / Windows10 OS 32 bits or 64 bits
Technical Performance	
Resolution	6.6 lp/mm
Energy Range	40~160KV / 350KV
Lag	0.8% @ 1st frame
Dynamic Range	\geq 72 dB
Sensitivity	370 lsb/uGy
SNR	44 dB @ (2000lsb)
MTF	80% @ (1 lp/mm) 52% @ (2 lp/mm) 33% @ (3 lp/mm)
DQE (2uGy)	55% @ (0 lp/mm) 40% @ (1 lp/mm) 26% @ (2 lp/mm)
Mechanical	
Dimension(H x W x D)	191 x 176.5 x 40 mm
Weight	1.75 kg / 3.5 kg
Sensor Protection Material	Carbon Fiber
Housing Material	Aluminum Alloy
Environmental	
Temperature Range	10~35°C (operating) ; -10~50°C (storage)
Humidity	30~70% RH (non-condensing)
Vibration	IEC 60068-2-64 Operation: 1G, 5-500Hz
Shock	IEC 60068-2-27 Operation: 2G, duration 11ms
Dust and Water Resistant	IPX0
Power	
Supply	100~240 VAC
Frequency	50/60 Hz
Consumption	14 W

