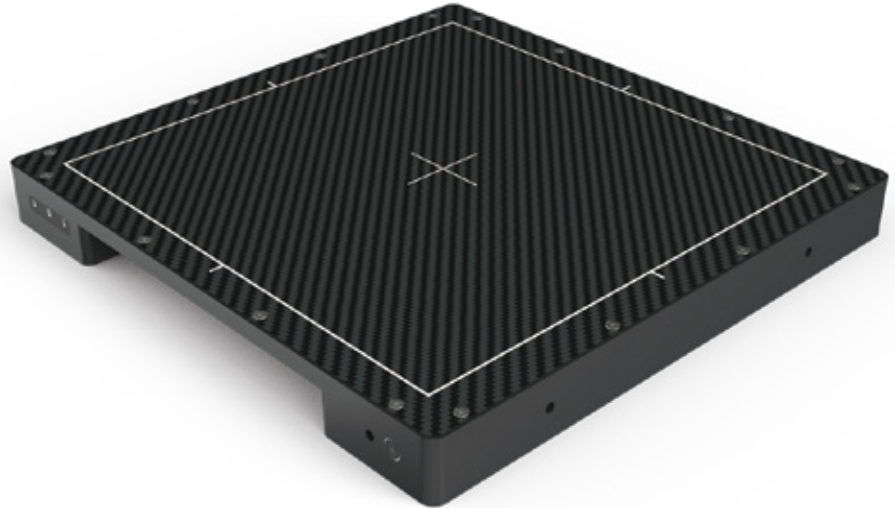


X-Panel 2323z FXM-TG

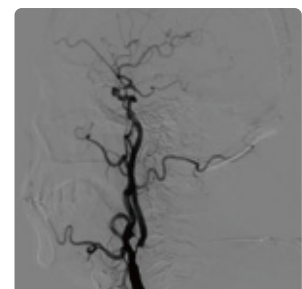
IGZO X-ray flat panel detector



Key Features

- Embedded image calibration feature for easy integration
- Pixel size 148 μm
- Low-noise, excellent dynamic image even at a low dose
- High speed without image delay
- The frame rate of Max. 80 fps (1x1)
- Cost saving

X-Panel 2323z FXM-TG is a 23 x 23 cm fixed type, dynamic flat panel detector based on Indium Gallium Zinc Oxide technology. The advanced IGZO TFT with CsI Scintillator provides an ultra low-noise image at a low dose and a high acquisition frame rate. It features excellent sensitivity and high dynamic range modes. X-Panel 2323z FXM-TG structural design effectively reduces the bending radius of the detector outlet, shortening the wiring space for easy installation and integration of systems. It performs well in C-arm systems, image intensifier replacement and upgrade.



Technical Specifications

| Technology | |
|----------------------------|---|
| Sensor | IGZO |
| Scintillator | CsI |
| Active Area | 227 x 227 mm |
| Pixel Matrix | 1536 x 1536 |
| Pixel Pitch | 148 μ m |
| AD Conversion | 16 bits |
| Interface | |
| Data Interface | 10G Ethernet |
| Exposure Control | Pulse Sync In / Pulse Sync Out |
| Work Mode | Software Mode / HVG Sync Mode / FPD Sync Mode |
| Frame Speed | 80 fps (1x1) |
| Operating System | Windows7 / Windows10 OS 32 bits or 64 bits |
| Technical Performance | |
| Resolution | 3.37 lp/mm |
| Energy Range | 40~160 KV |
| Lag | 0.8% @ 1st frame |
| Dynamic Range | \geq 88dB |
| Sensitivity | 740 lsb/uGy |
| SNR | 50 dB @ (20000lsb) |
| MTF | 70% @ (1 lp/mm) |
| | 42% @ (2 lp/mm) |
| | 23% @ (3 lp/mm) |
| DQE (2uGy) | 68% @ (0 lp/mm) |
| | 43% @ (1 lp/mm) |
| | 28% @ (2 lp/mm) |
| Mechanical | |
| Dimension(H x W x D) | 268 x 265 x 28 mm |
| Weight | 2.9 Kg |
| Sensor Protection Material | Carbon Fiber |
| Housing Material | Aluminum Alloy |
| Environmental | |
| Temperature Range | 10~35°C (operating) ; -10~50°C (storage) |
| Humidity | 30~70% RH (non-condensing) |
| Vibration | IEC 60068-2-6 Operation: 0.7G, 10-150Hz |
| Shock | IEC 60068-2-27 Operation: 2G, duration 11ms |
| Dust and Water Resistant | IPX0 |
| Power | |
| Supply | 100~240 VAC |
| Frequency | 50/60 Hz |
| Consumption | 14 W |

