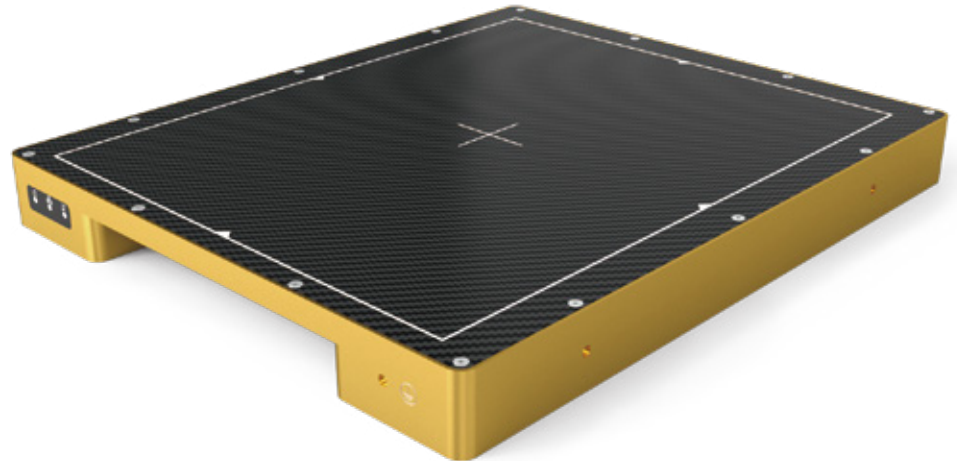


# X-Panel 2530a FQI-X-QM

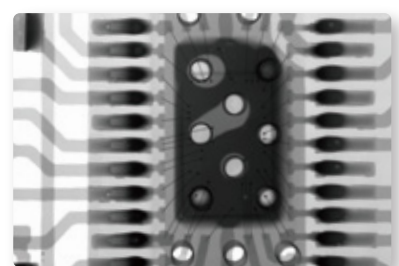
a-Si X-ray flat panel detector



## Key Features

- 100  $\mu\text{m}$  pixel pitch
- Excellent sensitivity and high dynamic range modes
- ROI area scan function can replace the linear array detector
- CSI scintillator offers lower dose and high image quality

X-Panel 2530a FQI-X-QM is a 24.3 x 30.7cm fixed type and low noise X-ray flat panel detector based on a-Si technology that features excellent sensitivity and high dynamic range modes among other benefits. X-Panel 2530a FQI-X-QM has good image quality and a large dynamic range. It is an optimal solution in lithium battery, electronics application .



# Technical Specifications

Technology	
Sensor	a-Si
Scintillator	CsI / GOS
Active Area	241.6 x 303.2 mm
Pixel Matrix	2416 x 3032
Pixel Pitch	100 $\mu$ m
AD Conversion	16 bits
Interface	
Data Interface	2.5G Ethernet
Exposure Control	Pulse Sync In / Pulse Sync Out
Frame Speed	12fps (1 $\times$ 1) / 24fps (2 $\times$ 2)
Operating System	Windows7 / Windows10 OS 32 bits or 64 bits
Technical Performance	
Resolution	5.0 lp/mm
Energy Range	40~160 KV / 350KV
Lag	0.8% @ 1st frame
Dynamic Range	$\geq$ 76 dB
Sensitivity	360 lsb/uGy
SNR	47 dB @ (20000lsb)
MTF	75% @ (1 lp/mm) 48% @ (2 lp/mm) 29% @ (3 lp/mm)
DQE (2uGy)	64% @ (0 lp/mm) 38% @ (1 lp/mm) 21% @ (2 lp/mm)
Mechanical	
Dimension(H x W x D)	343 x 286 x 34.5 mm
Weight	4.4 kg / 9 kg
Sensor Protection Material	Carbon Fiber
Housing Material	Aluminum Alloy
Environmental	
Temperature Range	10~35°C (operating) ; -10~50°C (storage)
Humidity	30~70% RH (non-condensing)
Vibration	IEC 60068-2-64 Operation: 1G, 5-500Hz
Shock	IEC 60068-2-27 Operation: 2G, duration 11ms
Dust and Water Resistant	IPX0
Power	
Supply	100~240 VAC
Frequency	50/60 Hz
Consumption	16.5 W

