

X-Panel 3030z FDM-TG

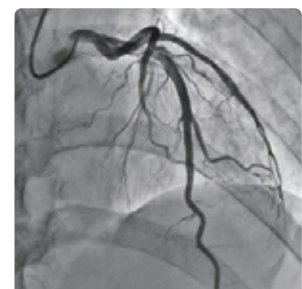
IGZO X-ray flat panel detector



Key Features

- Embedded image calibration feature for easy integration
- Pixel pitch 148 μm
- Low-noise, excellent dynamic image even at a low dose
- High speed without image delay
- The frame rate of Max. 30 fps (1x1) and Max. 60 fps (2x2)
- Direct deposition Cesium Iodide (CsI) Scintillator effectively reduces light scattering between pixels

X-Panel 3030z FDM-TG is a 30 x 30 cm fixed type, dynamic flat panel detector based on Indium Gallium Zinc Oxide technology. The advanced IGZO TFT with CsI Scintillator provides an ultra low-noise image at a low dose and a high acquisition frame rate. It features excellent sensitivity and high dynamic range modes for high-end applications including cardiac and cerebral angiography. X-Panel 3030z FDM-TG structural design effectively reduces the bending radius of the detector outlet, shortening the wiring space for easy installation and integration of systems. It performs well in C-arm systems .



Technical Specifications

Technology	
Sensor	IGZO
Scintillator	CsI
Active Area	303 x 303 mm
Pixel Matrix	2048 x 2048
Pixel Pitch	148 μm
AD Conversion	16 bits
Interface	
Data Interface	10G Ethernet
Exposure Control	Pulse Sync In / Pulse Sync Out
Work Mode	Software Mode / HVG Sync Mode / FPD Sync Mode
Frame Speed	30 fps (1x1) / 60fps (2x2)
Operating System	Windows7 / Windows10 OS 32 bits or 64 bits
Technical Performance	
Resolution	3.37 lp/mm
Energy Range	40~160 KV
Lag	0.8% @ 1st frame
Dynamic Range	≥88 dB
Sensitivity	740 lsb/uGy
SNR	50dB @ (20000lsb)
MTF	70% @ (1 lp/mm) 42% @ (2 lp/mm) 23% @ (3 lp/mm)
DQE (2uGy)	68% @ (0 lp/mm) 43% @ (1 lp/mm) 28% @ (2 lp/mm)
Mechanical	
Dimension(H x W x D)	344 x 341 x 28 mm
Weight	4.5 Kg
Sensor Protection Material	Carbon Fiber
Housing Material	Aluminum Alloy
Environmental	
Temperature Range	10~35°C (operating) ; -10~50°C (storage)
Humidity	30~70% RH (non-condensing)
Vibration	IEC 60068-2-6 Operation: 0.7G, 10-150Hz
Shock	IEC 60068-2-27 Operation: 2G, duration 11ms
Dust and Water Resistant	IPX0
Power	
Supply	100~240 VAC
Frequency	50/60 Hz
Consumption	17.5 W

