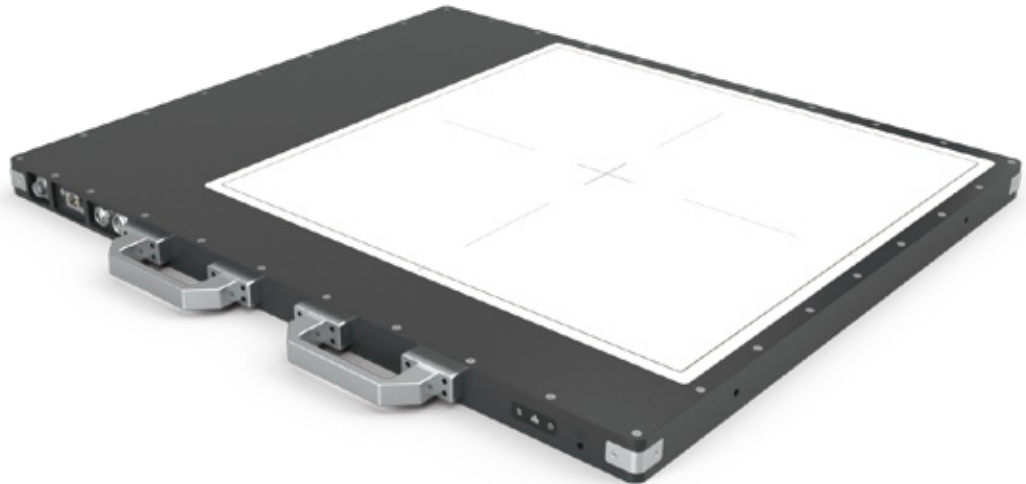


X-Panel 4343a FQM-XH

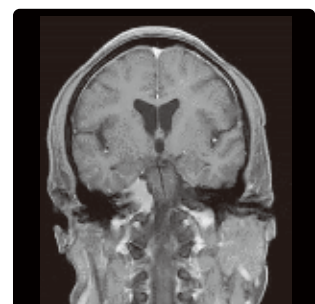
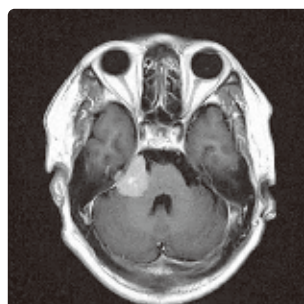
a-Si X-ray flat panel detector



Key Features

- The frame rate of Max. 8 fps (1x1) and Max. 16 fps (2x2), high positioning accuracy
- Dynamic imaging
- Ingress Protection rating of IP65
- 16MV high-energy protection design
- Direct evaporation coupled Cesium Iodide (CsI) Scintillator effectively reduces light scattering between pixels

X-Panel 4343a FQM-XH is a 43 x 43 cm fixed type, amorphous silicon, dynamic flat panel detector. It features excellent sensitivity and high dynamic range modes, the structural epitaxial radiation shield design offers user flexibility, and external protection. The 16MV high-energy is an optimal solution in tumor localization and radiotherapy accelerator application.



Technical Specifications

Technology	
Sensor	a-Si
Scintillator	CsI / GOS
Active Area	430 x 430 mm
Pixel Matrix	4288 x 4288
Pixel Pitch	100 μ m
AD Conversion	16 bits
Interface	
Data Interface	Optical Fiber
Exposure Control	Pulse Sync In / Pulse Sync Out
Work Mode	Software Mode / HVG Sync Mode / FPD Sync Mode
Frame Speed	8fps (1x1) / 16fps (2x2)
Operating System	Windows7 / Windows10 OS 32 bits or 64 bits
Technical Performance	
Resolution	5.0 lp/mm
Energy Range	\leq 16 MV
Lag	0.8% @ 1st frame
Dynamic Range	\geq 76 dB
Sensitivity	360 lsb/uGy
SNR	47 dB @ (2000lsb)
MTF	75% @ (1 lp/mm) 48% @ (2 lp/mm) 29% @ (3 lp/mm)
DQE (2uGy)	64% @ (0 lp/mm) 38% @ (1 lp/mm) 21% @ (2 lp/mm)
Mechanical	
Dimension(H x W x D)	630 x 540 x 30 mm
Weight	15.1 Kg
Sensor Protection Material	Carbon Fiber
Housing Material	Aluminum Alloy
Environmental	
Temperature Range	10~35°C (operating) ; -10~50°C (storage)
Humidity	30~70% RH (non-condensing)
Vibration	IEC 60068-2-6 Operation: 0.7G, 10-150Hz
Shock	IEC 60068-2-27 Operation: 2G, duration 11ms
Dust and Water Resistant	IP65
Power	
Supply	100~240 VAC
Frequency	50/60 Hz
Consumption	24 W

