

X-Panel 4343z FDM-TG

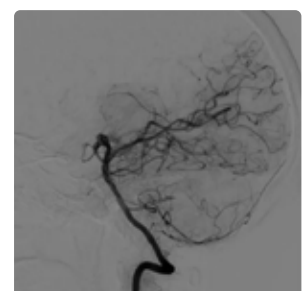
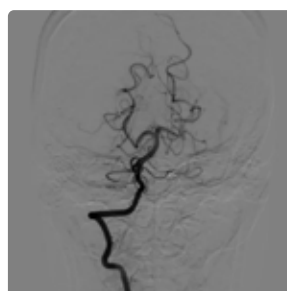
IGZO X-ray flat panel detector



Key Features

- Pixel pitch 140 μm
- Low-noise, excellent dynamic image even at a low dose
- High speed without image delay
- The frame rate 40 fps
- Direct deposition Cesium Iodide (CsI) Scintillator effectively reduces light scattering between pixels

X-Panel 4343z FDM-TG is a 43 x 43cm fixed type, dynamic flat panel detector based on Indium Gallium Zinc Oxide technology. The advanced IGZO TFT with CsI Scintillator provides an ultra low-noise image at a low dose and a high acquisition frame rate. It features excellent sensitivity and high dynamic range modes for high-end applications including cardiac and cerebral angiography. It is an optimal solution for digital fluoroscopy, dynamic DR, and DSA angiography.



Technical Specifications

Technology	
Sensor	IGZO
Scintillator	CSI
Active Area	430 x 430 mm
Pixel Matrix	3072 x 3072
Pixel Pitch	140 μ m
AD Conversion	16 bits
Interface	
Data Interface	10G Ethernet
Exposure Control	Pulse Sync In / Pulse Sync Out
Work Mode	Software Mode / HVG Sync Mode / FPD Sync Mode
Frame Speed	40 fps (1 \times 1)
Operating System	Windows7 / Windows10 OS 32 bits or 64 bits
Technical Performance	
Resolution	3.5 lp/mm
Energy Range	40~160 KV
Lag	0.8% @ 1st frame
Dynamic Range	\geq 88dB
Sensitivity	620 lsb/uGy
SNR	49 dB @ (20000lsb)
MTF	72% @ (1 lp/mm) 44% @ (2 lp/mm) 25% @ (3 lp/mm)
DQE (2uGy)	67% @ (0 lp/mm) 42% @ (1 lp/mm) 28% @ (2 lp/mm)
Mechanical	
Dimension(H x W x D)	470 x 470 x 32.5 mm
Weight	9.5 Kg
Sensor Protection Material	Carbon Fiber
Housing Material	Aluminum Alloy
Environmental	
Temperature Range	10~35°C (operating) ; -10~50°C (storage)
Humidity	30~70% RH (non-condensing)
Vibration	IEC 60068-2-6 Operation: 0.7G, 10-150Hz
Shock	IEC 60068-2-27 Operation: 2G, duration 11ms
Dust and Water Resistant	IPX0
Power	
Supply	100~240 VAC
Frequency	50/60 Hz
Consumption	29.5 W

