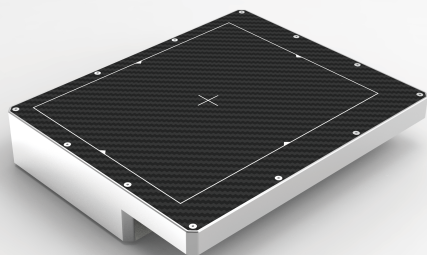


# Whale1613FDI-M

## Fixed Type X Ray Detector



## Whale1613FDI-M X Ray Detector

Whale1613FDI-M production is a fixed type and low noise x ray flat panel detector based on amorphous silicon technology. A-Si technology based detector owns many advantages that are unavailable with other technology, Whale1613FDI-M production takes a high image quality and a large dynamic range, also Whale1613FDI-M possesses multi-gain stage, this function makes it possible that the detector can both be suitable for high sensitivity and large dynamic range requirements. Based on above characteristics, Whale1613FDI-M detector can be widely used in medical, industrial, veterinary, and research application area.

Key features for amorphous silicon technology:

- ◆ Large dose dynamic range
- ◆ Long life time

### Key Features

- Pixel Pitch: 125  $\mu\text{m}$
- Pixel Matrix: 1024 x 1280
- ADC: 16-bit
- Gain Stage: Multi-Gain
- Scintillator: CSI/GOS
- Water Proof: IPX0
- Interface: Gigabit Ethernet  
High voltage generator  
Power
- Calibration: Software, Firmware
- Radiation Hardness:  $\geq 10000\text{Gy}$

### Application

- Medical
- Industry
- Veterinary
- Research

#### Technology

Sensor	a-Si
Scintillator	CSI/GOS
Active Area	160 x 128 mm
Pixel Matrix	1024x 1280
Pixel Pitch	125 $\mu\text{m}$
AD Conversion	16 bits

#### Interface

Communication Interface	Gigabit Ethernet
Exposure Control	Pulse Sync In (Edge or Level) / Pulse Sync Out (Edge or Level)
Mode	Software Mode / HVG Sync Mode / FPD Sync Mode
Frame Speed	30fps
Operating System	Windows7 / Windows10 OS 32 bit or 64 bit

#### Technical Performance

Resolution	4.0 lp/mm
Energy Range	40~350 KV
Lag	< 1% 1st frame
Dynamic Range	$\geq 86$ dB
Sensitivity	460 lsb/uGy
SNR	49 dB @(20000lsb)
MTF	75% @(1 lp/mm) 41% @(2 lp/mm) 25% @(3 lp/mm)
DQE (2uGy)	62% @(0 lp/mm) 45% @(1 lp/mm) 28% @(2 lp/mm)

#### Mechanical

Dimension(H x W x D)	196 x 162x 37.5 mm
Weight	2.8 Kg
Sensor Protection Material	Carbon Fiber
Housing Material	Aluminum Alloy

#### Environmental

Temperature Range	10~35°C (operating); -10~50°C (storage)
Humidity	30~70% RH (non-condensing)
Vibration	IEC/EN 60721-3 class 2M3 (10~150 Hz, 0.5 g)
Shock	IEC/EN 60721-3 class 2M3 (11 ms, 2 g)
Dust and Water Resistant	IPX0

#### Power

Supply	100~240 VAC
Frequency	50/60 Hz
Consumption	8 W

#### Regulatory

CFDA (China)	
FDA (USA)	
CE (Europe)	

# Whale1613FDI-M

Fixed Type X Ray Detector

